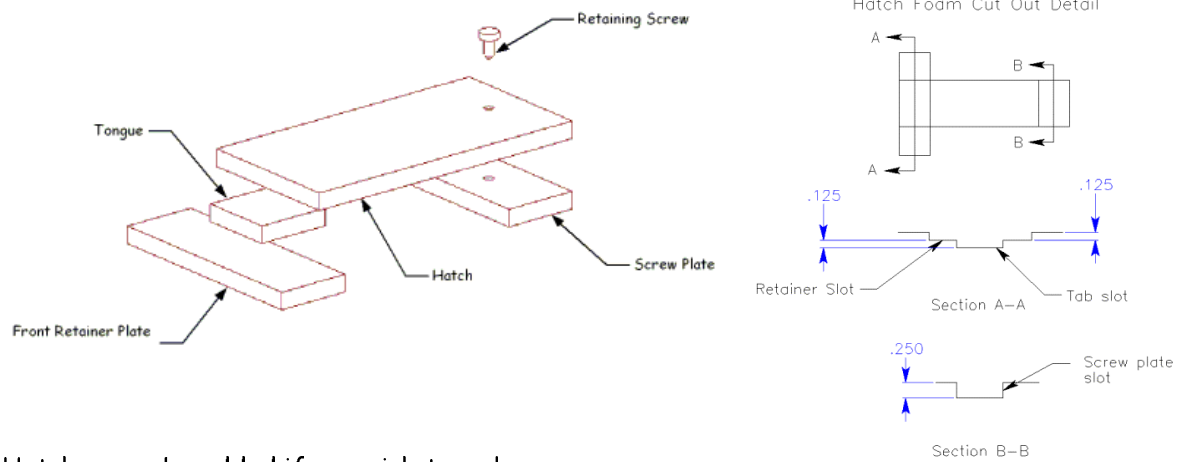


Building Options

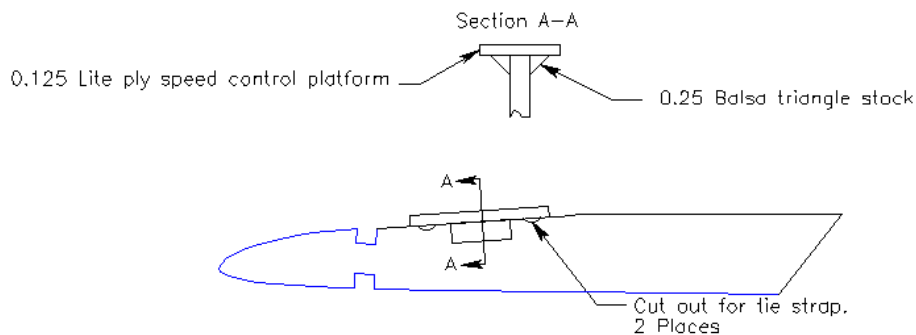
Access Hatches



Hatches can be added if you wish to make your components accessible/removable. The drawings above illustrate the method we have successfully used to create hatches. The exact dimensions of the hatch depend on the size of the cutouts made in the fuselage. If built as shown, the hatch will be flush with the surface of the fuselage. All material was 0.125 lite ply.

Non-Jeti 14C Speed Control Installations

Mounting platform for Non-Jeti 10C Speed Controls



Our solution for non-Jeti 10C speed controls involves mounting the speed control on a platform constructed forward of the motor tube. Two notches are cut or sanded so that strap ties can be used to secure the speed control to the platform. Care must be taken to avoid mounting the platform too close to the wing and cause interference with the wing mounting rubber bands.

Antenna Routing Tube



The antenna routing tube allows the receiver to be inserted and removed without having to penetrate the covering material to open up the slit. This is another option aimed at being able to remove and access the components at will.

A slot is cut in the very bottom edge of one side of a fuselage tail boom. The tube is a plastic push rod sheath such as those sold by Du-Bro or Sullivan. The slot is made so that the tube is even with the surrounding EPP. Run a bead of Goop in the slot and secure the tube in the slot with masking tape until dry. Continue fuselage assembly as normal.